



**MILES ESTATE AGENTS**

**Parsonage Cottage 21 Mount Street Bishops  
Lydeard Taunton TA4 3AN £575,000**





\*\*\*PRICE IMPROVEMENT\*\*\*A

spacious and well presented 4/5 bedroom extended detached sandstone cottage tucked away down a lane with around an acre of gardens and grounds in the heart of this superb Quantock village with its extensive range of amenities on hand and within Kingsmead catchment area. 2 reception rooms, modern kitchen/breakfast room, useful study / bedroom 5 and lots of privacy, garage and parking - early viewing highly recommended. Freehold Council Tax Band E EPC : D







## Features:

- Entrance hall
- Spacious living/dining room with woodburning stove
- Sitting room / snug
- Kitchen / breakfast room
- Utility & cloakroom
- Useful study / bedroom 5
- 4 good size bedrooms
- En suite & family shower room
- Gardens & grounds of c.1 acre
- Lots of parking & single garage
- Freehold
- Council Tax Band E
- EPC : D





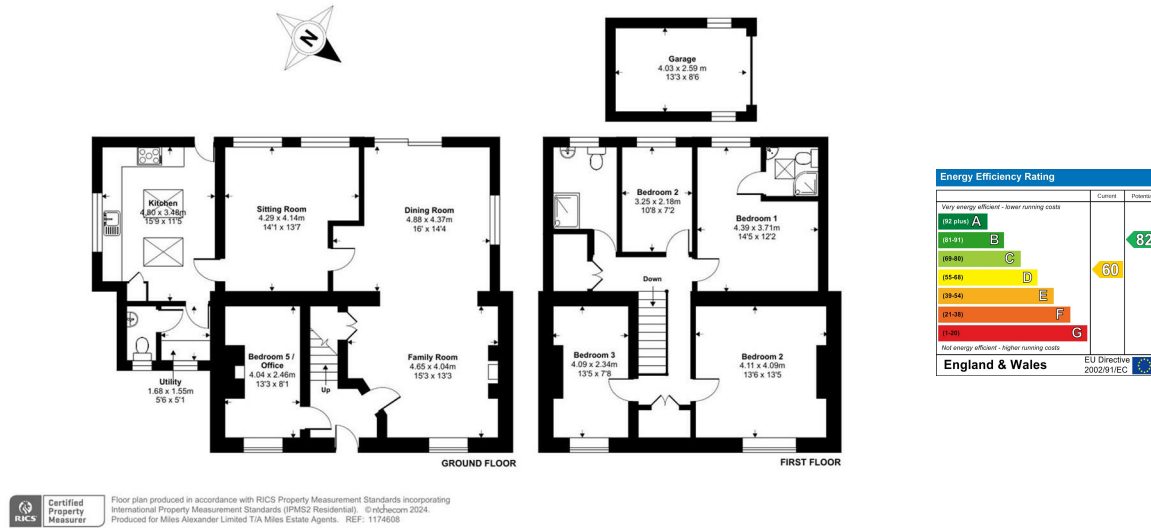
## Mount Street, Bishops Lydeard, Taunton, TA4

Approximate Area = 1865 sq ft / 173.2 sq m

Garage = 113 sq ft / 10.4 sq m

Total = 1978 sq ft / 183.7 sq m

For identification only - Not to scale



Viewings strictly through the selling agents:

**Miles Estate Agents**

2 Piffin Lane, Bishops Lydeard, Taunton,  
Somerset, TA4 3AS

**Tel: 01823 470 500**

[lydeard@milesestateagents.co.uk](mailto:lydeard@milesestateagents.co.uk)

[www.milesestateagents.co.uk](http://www.milesestateagents.co.uk)

**rightmove**

**OnTheMarket.com**

**MILES ESTATE AGENTS**

**BEST**  
ESTATE AGENT GUIDE  
2019 : EXCEPTIONAL  
SALES